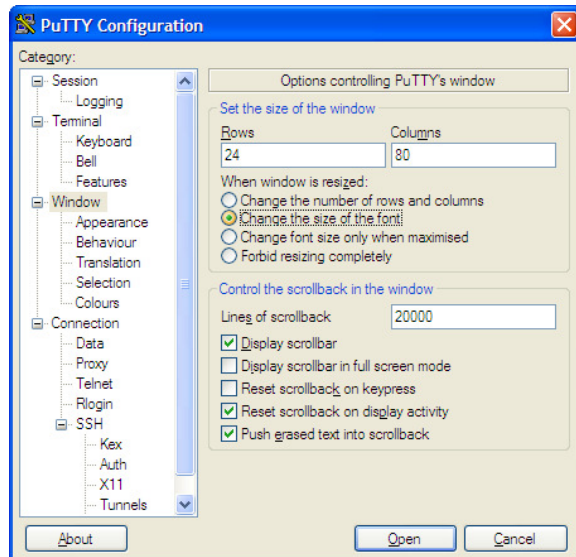
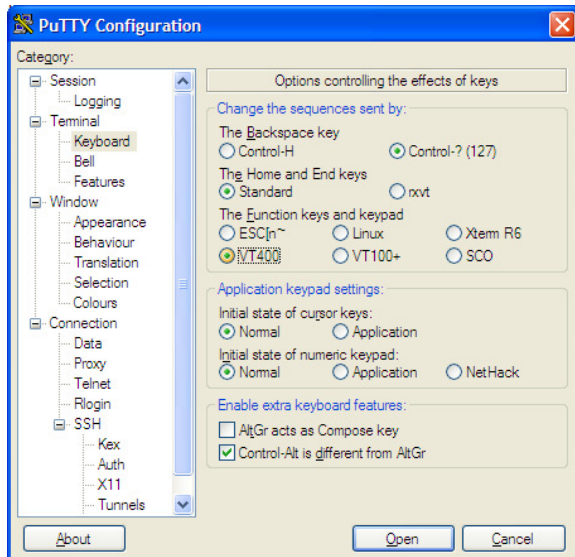
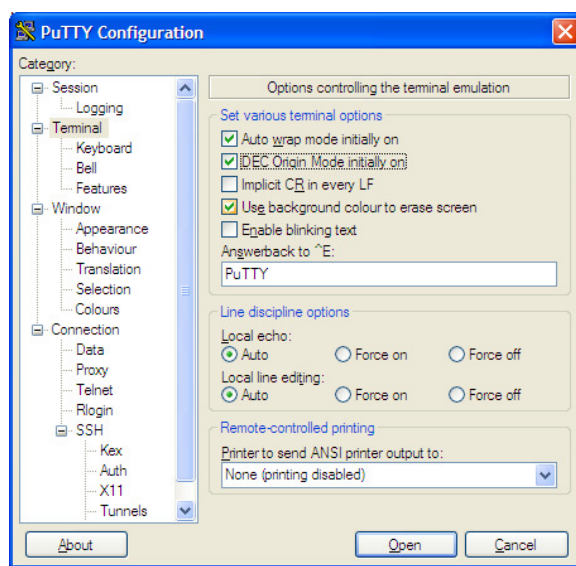
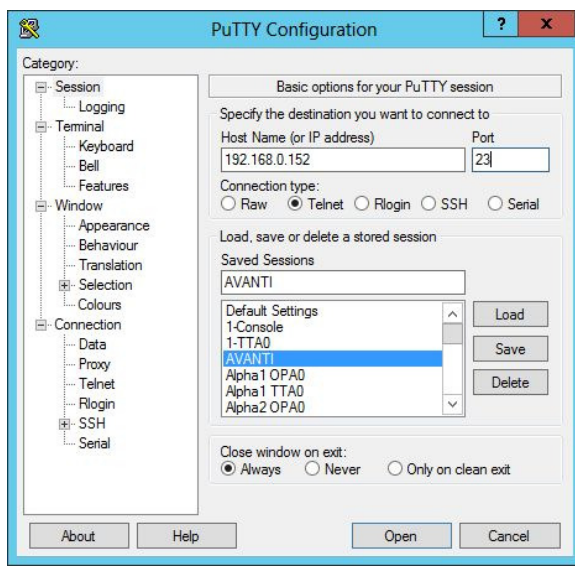
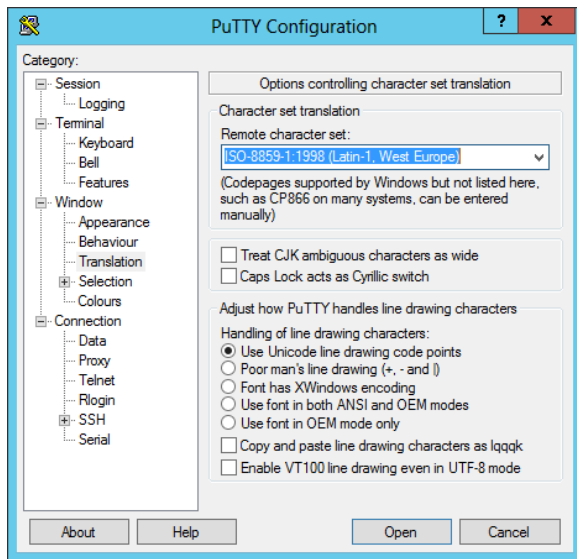


PuTTY Settings

OpenVMS Settings

Starting with a default PuTTY configuration, these are the settings we typically use to access VMS systems. These work for VAX, Alpha, and Integrity platforms along with virtual VAX and Alpha systems via serial or telnet connections.





Tru64 Unix Settings

Tru64 guru John Manger prefers these settings when working with Tru64 Unix, Linux, SCO Unix, and BSD Unix.

